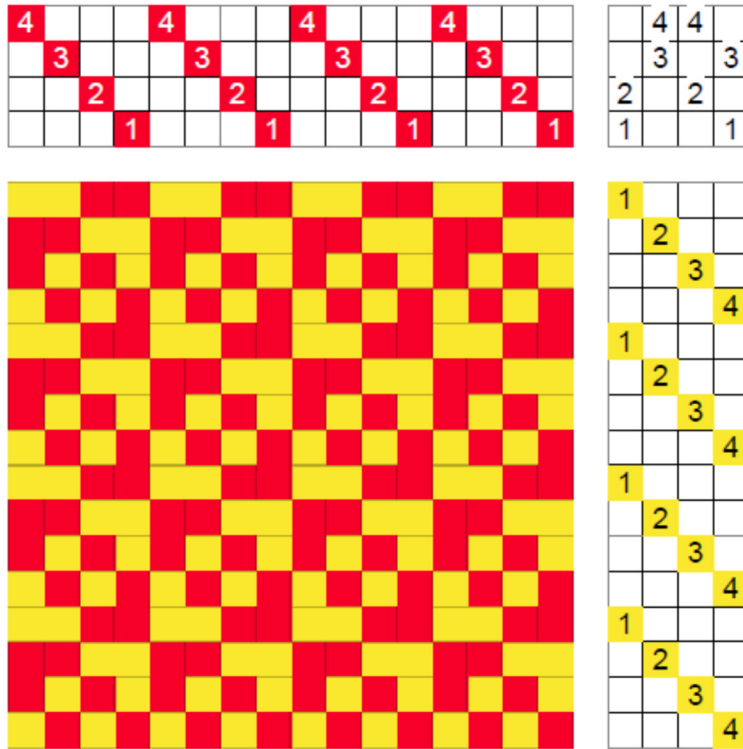


# Crepe Weave

A crepe fabric is generally one woven with crepe yarns; according to Mable Ross, the fabric structure is plain weave, the yarns, usually silk, are highly twisted and S- and Z-twisted warp threads alternate, resulting in

a textured fabric.

We can think of crepe weave as an imitation of the fabric produced with crepe yarns; it is a treadling method (see entry) applied to a straight twill which weaves two pairs of “on opposite” treadling: 1 & 3 is followed by its opposite 2 & 4; and 1 & 2 is followed by its opposite 3 & 4, as shown in the drawdown on the left.



Where the shot on 3 & 4 follows the one on 1 & 2, a characteristic ridge is formed, which can be seen in the fabric on the right.

This structure is sometimes lumped with canvas weave (see entry) because of the identical tie-up, but canvas weave is a grouped unit weave which can form lace.

